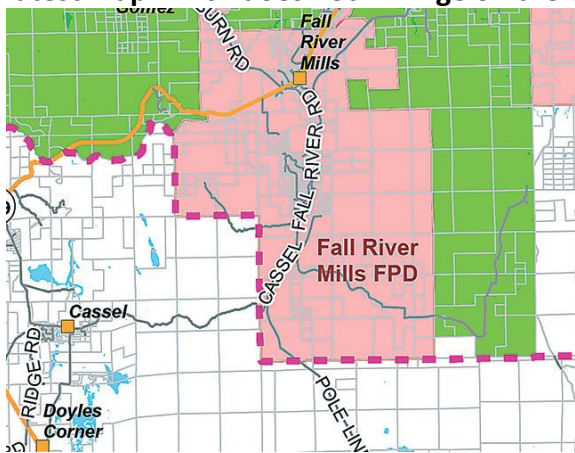


Map stories don't jive



(Above) a proposed sphere map by LAFCO in existence Feb. 19 shows the proposed sphere of influence boundary abutting the Burney Fire District's boundary and taking in Baum Lake. (Below) the latest map which does not infringe on the Cassel area.



McARTHUR — The top proposed sphere of influence map showing Crystal and Baum Lake, including much of the town of Cassel, yet LAFCO executive officer Jan Lopez says the one at the bottom is the only one that ever existed.

In early March Lopez, told Mountain Echo in a phone conversation that the one pictured here at the bottom was the only proposed sphere map that ever existed. Edie Baltzer of Cassel who has been following the proposals as a concerned Cassel citizen gave Mountain Echo the copy of the map which she said she copied on from the LAFCO web site and was in effect February 19. Brent Cassity, Chief of the Northwest Lassen Fire District and others involved with the Valley Departments say they never wanted the Cassel Area and never okayed any boundaries that infringed on the Cassel area.

LAFCO is hosting an informal workshop on Tuesday, March 24 at 5:00 p.m. at Ingram Hall in the Intermountain Fairgrounds. Representatives from LAFCO will be in to discuss the proposed Sphere of Influence and Service Area map of the Fall River Valley Coordinated Fire Protection District.

LETTERS TO THE EDITOR

Cal Fire is not the bad guy

Editor: In response to opinions stated in the editorial and letter written by Mr. Cassity, Cal Fire is not the bad guy here. We would like to clarify and correct Mr. Cassity's letter of 3/3/ 2015. Shasta County contracts with Cal Fire to administer Shasta County Fire. The Soldier Mountain Volunteer Fire Company is one of 18 volunteer companies that make up the Shasta County Fire Department and together with Cal Fire provides cooperative fire protection for those areas outside incorporated cities and fire districts.

Further, Cal Fire's only interest in fire protection in the Fall River Valley is the suppression of wildfires on state responsibility land. This includes private lands not within incorporated cities or within forest service protection areas. This will not change. The Soldier Mountain VFC was formed in 1982 following the Chalk Fire. The residents of Glenburn and Dana, concerned about the response time to this area, organized the volunteers and built our current fire station. McArthur Fire was approached about putting a sub-station in the Glenburn area. While McArthur Fire did help with initial training, they did not feel they could provide services that far outside their district boundary so their answer was no. The volunteer group then went to the county fire system and Company 13 was started. Soldier Mountain VVFC was never an independent district in itself. As a part of Shasta County Fire, the Soldier Mountain VFC receives training as required by the Romero Act, vehicle maintenance, fire and emergency Medical response vehicles and equipment we could never afford as an independent fire department.

Cal Fire's participation in LAFCO's proposal for the McArthur-Fall River Sphere of influence is not Cal Fire stirring the pot. Cal Fire is acting as the Shasta County Fire Warden for the Shasta County Fire Department and is only concerned with assuring the best possible fire and emergency medical protection for the citizens within the department's many response areas. Concerns have been voiced that without this sphere of influence change emergency response in the valley will be affected. This is not true. Like all fire entities in California, the fire entities in the Fall River Valley operate under a mutual aid agreement. These agreements are part of the statewide Master Mutual Aid Plan managed by the state office of emergency services.

This plan recognized that no department can handle everything and assures that in time of need there will be response from adjoin fire stations to help a neighbor. In conclusion, Soldier Mountain Volunteer Fire Company and its board of directors, and the Shasta County Fire Department are opposed to LAFCO's proposal as it could affect the level of service for citizens residing within the Soldier Mountain VFC response area.

Soldier Mountain VFC Board of Directors
And Volunteer Personnel

Mountain Echo, March 17, 2015 Edition

Fall River Valley Coordinated Fire District (SOI)
Sphere of Influence Map

Never Ever?

Sphere map not encroaching on Cassel

The article informs everyone reading it, that Cassel was never ever included in any Shasta LAFCO produced SOI map, for the Fall River Valley Coordinated Fire Protection District (FRVC FPD). I quote; "According to Shasta LAFCO Executive Officer Jan Lopez and Northwestern Lassen Fire Protection District Chief Brent Cassidy, neither Shasta LAFCO nor the Fall River, McArthur, or Northwest Lassen Fire Districts have changed their proposal map from the outset. The proposed boundaries shown are the same ones they originally agreed on. "

I beg to differ! The map published in the MT Echo on 3/10/2015, is the latest of many maps issued by Shasta LAFCO since the November 6, 2014 Shasta LAFCO meeting. There are three maps included in the November 6, 2014- DRAFT FRVC FPD Sphere Report, these maps are very different from the map on the front page of the Mt Echo Newspaper on March 10, 2015. The SOI maps from the Nov. 6, 2014 Report included approximately one half of the area of the community of Cassel. The new boundary was south of and parallel to Baum Lake Road, the boundary line went west to the Burney FPD SOI, and East to the Fall River mills FPD SOI. As of today's date (3/12/2015@ 3:30 p.m.), these maps can be viewed on the Shasta LAFCO website; click on-Meetings/ Agendas & Minutes/2014/Nov. 6, 2014/Agenda interactive). The maps are posted as; Exhibit A, Exhibit B, and attached to Exhibit I.

The printed statements in the Mt Echo on March 10, 2015 prove one fact; Shasta Executive Officer Jan Lopez and Northwestern Lassen FPD Chief Brent Cassidy still believe that anyone living north of Baum Lake Rd in Cassel, CA, does not live in the Community of Cassel, CA. The longtime residents of Cassel separated by the proposed SOI from the November 6, 2014 Report, really felt the dismissive attitude set forth by the Shasta LAFCO Report for the FRVC FPD Service Area Sphere. But I witnessed the indifference in person at the December 18, 2014 Shasta LAFCO Meeting.

I bet if you ask any one of these Cassel residents about this issue, they would let you know, in no uncertain terms, that they do live in Cassel, CA, and proud of it! Shasta LAFCO and the three agencies, Fall River, McArthur, and Northwestern Lassen Fire Protection Districts need to form the three agency district they originally wanted, just the three districts and their original Sphere of Influences. Shasta County Fire presented a very good map that shows just this idea, along with a little more area in the Sphere of Influence. I am strongly suggesting the "Three Agencies" tell Shasta LAFCO that you want only your three districts combined!

Eddie Baltzer
Cassel