



COUNTY SERVICE AREA # 13 Alpine Meadow

Municipal Service Review &
Sphere of Influence Update

PUBLIC DRAFT
March 2017

Draft Hearing April 6 2017
Final Adoption- ADD DATE

SHASTA LOCAL AGENCY FORMATION COMMISSION

Commissioners

Les Baugh, County Member - District 5 Supervisor
David Kehoe, County Member - District 1 Supervisor
Larry Farr, City Member - City of Shasta Lake
Stan Neutze, City Member - City of Anderson
Brenda Haynes, Special District Member - Anderson Cottonwood Irrigation District
Irwin Fust, Special District Member - Clear Creek Community Services District
Dick Fyten, Public Member

Alternate Members:

Mary Rickert, County Member - District 3 Supervisor
Francie Sullivan, City Member- City of Redding
VACANT, Special District Member _____ District
Bob Richardson, Public Member

Staff:

George Williamson, AICP, Executive Officer
Colette Metz, Analyst
Kathy Bull, Office Manager
Sarah West, Service Specialist
Jason Barnes, GIS Analyst
Leslie Marshall, Administrator
Julie Thomas, Services Assistant
James M. Underwood, Legal Counsel

Acknowledgements:

LAFCO staff would like to thank the contributors to this Municipal Service Review and Sphere of Influence Update. Valuable assistance in completing this report was provided by: Shasta County Department of Public Works. This report was made possible with their assistance.

Table of Contents

INTRODUCTION	2
CSA OVERVIEW.....	2
PRINCIPAL ACT.....	2
SERVICE REVIEW DETERMINATIONS.....	2
SPHERE OF INFLUENCE DETERMINATIONS	3
REVIEW METHODS.....	3
CALIFORNIA ENVIRONMENTAL QUALITY ACT	4
COUNTY SERVICE AREA # 13 – ALPINE MEADOWS.....	4
OVERVIEW.....	4
<i>Boundary and Sphere of Influence</i>	<i>5</i>
<i>Formation.....</i>	<i>5</i>
<i>Governance Structure</i>	<i>5</i>
<i>Management and Staffing</i>	<i>7</i>
<i>Other Service Providers</i>	<i>7</i>
PRESENT AND PLANNED LAND USES	7
<i>Existing Land Uses.....</i>	<i>7</i>
<i>General Plan, Zoning, and Policies</i>	<i>7</i>
POPULATION AND GROWTH.....	7
DISADVANTAGED UNINCORPORATED COMMUNITIES	8
DISTRICT SERVICE & INFRASTRUCTURE	8
<i>Water Service Overview</i>	<i>8</i>
<i>Wastewater Service Overview.....</i>	<i>9</i>
<i>System Monitoring</i>	<i>9</i>
<i>Infrastructure Needs and Deficiencies.....</i>	<i>9</i>
FINANCIAL INFORMATION	10
<i>Funding Needs.....</i>	<i>10</i>
<i>Service Rates</i>	<i>11</i>
<i>Financing Constraints and Opportunities.....</i>	<i>11</i>
<i>Cost Avoidance Opportunities.....</i>	<i>12</i>
GOVERNANCE STRUCTURE OPTIONS	12
MUNICIPAL SERVICE REVIEW DETERMINATIONS.....	12
SPHERE OF INFLUENCE DETERMINATIONS	14
List of Tables	
TABLE 1: CSA #13 - ALPINE MEADOWS AGENCY PROFILE	4
TABLE 2: CSA #13 – JONES VALLEY SOURCE DATA	9
TABLE 3: CSA #13 JONES VALLEY WATER MAINS	9
TABLE 4: CSA # 13 JONES VALLEY STORAGE DATA	9
TABLE 5. CSA #13 ALPINE MEADOWS REVENUES & EXPENDITURES.....	10
TABLE 6: CSA #13 RESIDENTIAL IN-SERVICE AREA RATE SCHEDULE - EFFECTIVE 2011:.....	11
TABLE 7: CSA #13 - WATER METER CONNECTION FEES AND ROAD CROSSING COSTS	11
LIST OF FIGURES	
INSERT FIGURE 1.....	ERROR! BOOKMARK NOT DEFINED.

INTRODUCTION

This Municipal Service Review (MSR) and Sphere of Influence (SOI) Update provides information about the services and boundaries of County Service Area #13 – Alpine Meadows (herein referred to as CSA #13). The report is for use by the Shasta Local Agency Formation Commission (LAFCO) in conducting a statutorily required review and update process. The Cortese-Knox-Hertzberg Local Government Reorganization Act of 2000 (CKH Act) requires that the Commission conduct periodic reviews and updates SOIs of all cities and special districts in Shasta County (Government Code § 56425). State law also requires that, prior to adopting a Sphere of Influence, LAFCO must conduct a review of the municipal services provided by that local agency (Government Code § 56430). This report provides LAFCO with a tool to study current and future public service conditions comprehensively and to evaluate organizational options for accommodating growth, preventing urban sprawl, and ensuring that critical services are provided efficiently.

CSA Overview

County Service Areas are dependent special districts under County Service Area law (Government Code § 25210-25217.4). They provide, water, sewer and other services to unincorporated areas. In Shasta County they are governed by the Board of Supervisors. The Shasta County Public Works Department provides staff support and administers District operations.

Principal Act

The principal act governing CSAs is the County Service Area law (Government Code §25210-25217.4) which authorizes CSAs to provide up to 26 types of governmental services within its boundaries. CSA #13 is authorized to provide water and sanitary sewer services. All other remaining services, facilities, functions or powers enumerated in the District’s principal act but not identified in the formation resolution are considered “latent,” meaning that they are authorized by the principal act under which the District is formed, but are not being exercised. Latent powers and services activation would require LAFCO authorization as indicated in Government Code § 25213.5.

Service Review Determinations

Government Code § 56430 requires LAFCO to conduct a review of municipal services provided in the county by region, sub-region or other designated geographic area, as appropriate, for the service or services to be reviewed, and prepare a written statement of determination with respect to each of the following topics:

1. Growth and population projections for the affected area;
2. The location and characteristics of any disadvantaged unincorporated communities within or contiguous to the sphere of influence;
3. Present and planned capacity of public facilities, adequacy of public services, and infrastructure needs or deficiencies (including needs or deficiencies related to sewers, municipal and industrial water, and structural fire protection in any disadvantaged, unincorporated communities within or contiguous to the sphere of influence);
4. Financial ability of agencies to provide services;

5. Status of, and opportunities for, shared facilities;
6. Accountability for community service needs, including governmental structure and operational efficiencies; and
7. Any other matter affecting or related to effective or efficient service delivery, as required by Commission policy.

State Guidelines and Commission policies encourage stakeholder cooperation in the municipal service review preparation. It also provides a basis to evaluate, and make changes to the Spheres of Influence, if appropriate.

Sphere of Influence Determinations

A Sphere of Influence is a LAFCO-approved plan that designates an agency’s probable physical boundary and service area. Spheres are planning tools used to provide guidance for individual boundary change proposals and are intended to encourage efficient provision of organized community services, discourage urban sprawl and premature conversion of agricultural and open space lands, and prevent overlapping jurisdictions and duplication of services.

LAFCO is required to establish SOIs for all local agencies and enact policies to promote the logical and orderly development of areas within the SOIs. Furthermore, LAFCO must update those SOIs every five years. In updating the SOI, LAFCO is required to conduct a municipal service review (MSR) and adopt related determinations. In addition, in adopting or amending an SOI, LAFCO must make the following determinations:

1. The present and planned land uses in the area, including agricultural and open-space lands;
2. The present and probable need for public facilities and services in the area;
3. The present capacity of public facilities and adequacy of public services that the agency provides or is authorized to provide;
4. The existence of any social or economic communities of interest in the area if the Commission determines that they are relevant to the agency; and
5. The present and probable need for public facilities and services related to sewers, municipal or industrial water, or structural fire protection of any disadvantaged unincorporated communities within the existing sphere of influence (effective July 1, 2012).

Review Methods

The following information was considered in the service review:

- o Agency-specific data: responses to LAFCO Requests for Information from Shasta County Public Works Department, maps, district plans and agency correspondence;
- o Land Use and Shasta County General Plan data: Shasta County Resource Management – Planning Division;
- o Demographic data: U.S. Census Bureau; Department of Finance; CA Water Resources Board;
- o Finances: budgets, rates and fees; and
- o Other Reports and Assessments: State Water Resources Control Board citation

Information gathered was analyzed and applied to make the required determinations. All information gathered for this report is filed by LAFCO for future reference.

California Environmental Quality Act

The California Environmental Quality Act (CEQA) is contained in Public Resources Code § 21000 et seq. Public agencies are required to evaluate the potential environmental effects of their actions. MSRs are statutorily exempt from CEQA pursuant to § 15262 (feasibility or planning studies) and categorically exempt pursuant to CEQA Guidelines § 15306 (information collection). CEQA requirements are applicable to SOI Updates. The CEQA lead agency for SOI Updates is most often LAFCO, unless an agency has initiated an SOI expansion or update.

COUNTY SERVICE AREA # 13 – ALPINE MEADOWS

Table 1: CSA #13 - Alpine Meadows Agency Profile

Formation	
Agency Name	County Service Area #13 Alpine Meadows
Formation Date	1972
Principal Act	California Government Code §25210 et seq.
Contact	
Main Contact	Patrick J. Minturn, Shasta County Public Works Director
E-mail	pminturn@co.shasta.ca.us
Website	http://www.co.shasta.ca.us/index/pw_index.aspx
District Office	Shasta County Department of Public Works
Mailing Address	1855 Placer St. Redding, CA 96001
Phone	(530) 225-5661
Governance	
Governing Body	Board of Directors (County Board of Supervisors)
Board Meetings	Tuesdays at 9:00 am, Board Chambers, 1450 Court St, Redding
Staffing	County Public Works
Services	
Services Provided	Domestic Water and Wastewater Services
Areas Served	Unincorporated community of Alpine Meadows

Overview

County Service Area (CSA) #13 is organized as a dependent special district under County Service Area law (Government Code Section 25210-25217.4). CSA #13 provides domestic water and wastewater services to the unincorporated area of Alpine Meadows located in eastern Shasta County west of Shingletown and approximately 30 miles east of Redding, adjacent to State Route 44. The CSA serves a population of about 43 with approximately 30 active service connections. A municipal service review for the City was previously conducted in 2014. This document will update the previous MSR and build upon information provided therein.

Boundary and Sphere of Influence

The current CSA #13 boundary covers approximately 255.8 acres and has two separate areas within current boundaries. The SOI is currently coterminous with the district boundary. The westerly area of the CSA provides only sewer services and the easterly area provides water and sewer services (see Figure 1). A SOI expansion is proposed to allow additional commercial use along State Route 44. This use has been approved by Shasta County.

An annexation is pending for the SOI expansion area. This proposed annexation is for a mixed use development which includes a 9,100-sq ft. retail building, a parking area, landscaping, and a storm water retention basin. A proposal to change the land use designation for a portion of the annexation area from the current Rural Residential (RR) designation to Mixed Use (MU), in anticipation of the development has been approved by the County. An Initial Study and Mitigated Negative Declaration (IS/MND) has been adopted as part of this action for California Environmental Quality Act (CEQA) compliance. The annexation application filed with LAFCO will rely on the same CEQA document the County used for annexation review.

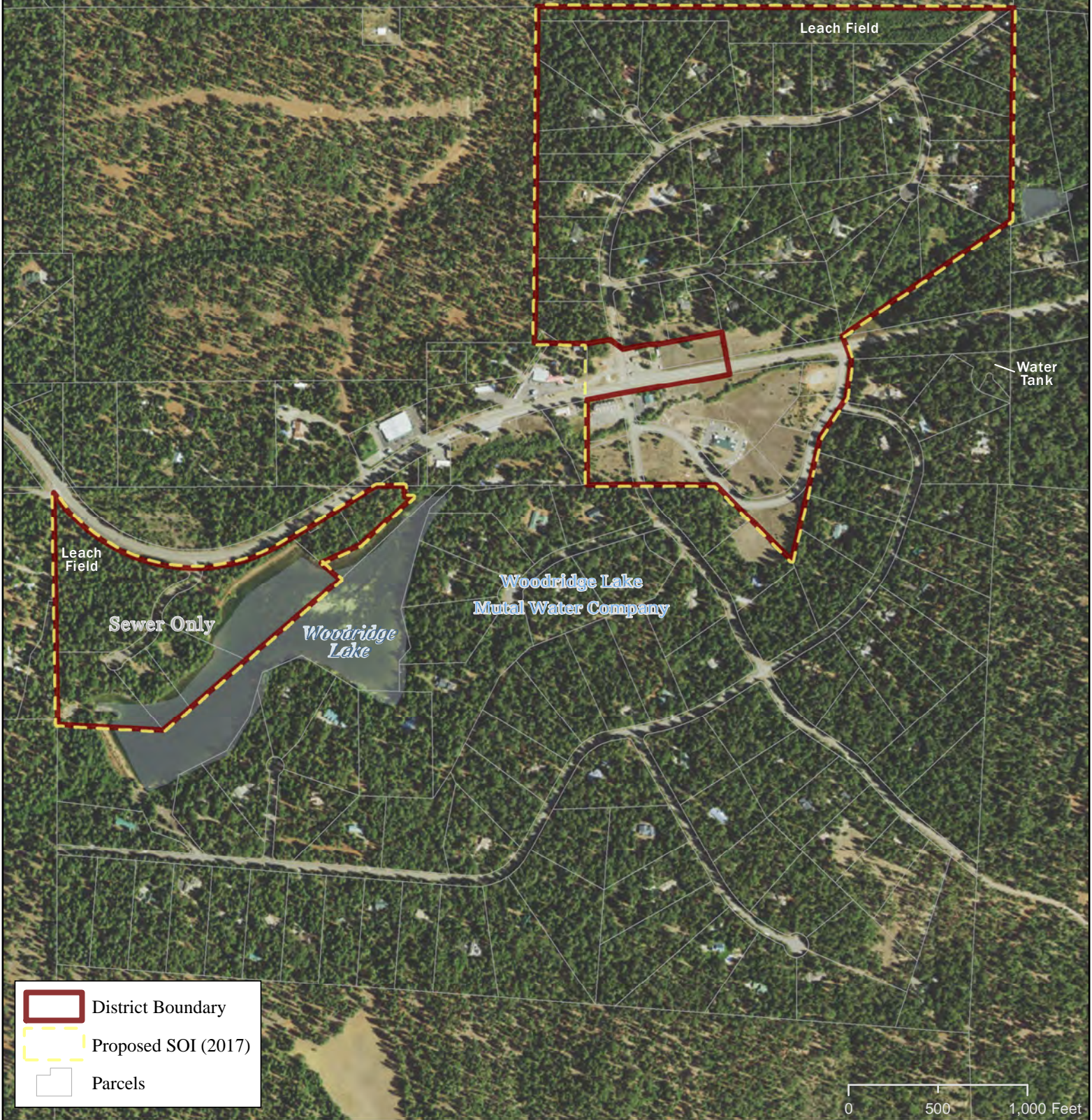
Water service for the SOI expansion and annexation area would be provided by CSA #13. Improvements to the site are included in the project and include, additional water storage, extension of the existing water service line, installation of meter service within the existing public right-of-way and extension of the water service line to a fire hydrant. An on-site septic system will provide sewage disposal. The County has determined that the services improvements necessary for the proposed development are sufficient, and has filed an annexation proposal.




Formation

Approved by LAFCO in 1972, CSA #13 - Alpine Meadows was authorized to provide any or all services provided for in Government Code § 25210.1 et seq. Due to the inability of the soil to accommodate conventional septic systems and leach fields, sewer service was the first service initiated for 27 parcels on 149.3 acres. Subsequent annexations increased the total District service area to 158.7 acres. Water services were added in 1982. Prior to that, water services were provided by a mutual water company or supplied from privately owned wells.

Governance Structure

CSA #13 is a dependent special district governed by the Shasta County Board of Supervisors. The Shasta County Public Works Department provides staff support and administers the operation of the District. In addition, a Community Advisory Board (CAB) consisting of seven (7) members serve as a liaison between district residents and the County. The CAB was established by the County in 1984 pursuant to Resolution No. 84-6. The CAB members are appointed by the County Board of Supervisors and serve two-year terms. Each year property owners are invited to nominate CAB candidates for vacant CAB seats. Elections are held if willing candidates exceed the number of vacant seats. CSA #13 does not currently have a CAB. Such a body could provide a vehicle for more local participation and accountability. Affected constituents may provide input directly to County staff or the respective member of the Board of Supervisors.



-  District Boundary
-  Proposed SOI (2017)
-  Parcels



County Services Area #13 Alpine Meadows

Figure

Date: 2/15/2017

Management and Staffing

The County Public Works Department provides administrative support, staffing, and operations for 11 CSAs, including the Alpine Meadows water system. The department has one operation supervisor, four licensed water treatment plant operators, and five part-time non-licensed employees. The Department is responsible for maintaining, upgrading or replacing equipment. They also manage budgets, suggest rates for services, and assure compliance with all laws relating to quality, health and safety. The Department manages funds for capital improvement projects, bond assessments, and debt service of the CSAs, and administers billing of CSA customers.

Other Service Providers

Fire Protection

Fire protection and emergency response services are provided by CSA #1 - Shasta County Fire Department (SCFD), which provides fire protection to all areas of the county outside existing fire protections districts and cities providing fire protection. The SCFD contracts with CAL FIRE to provide all department administration and operations functions. In addition, the SCFD supports 18 volunteer fire companies by providing oversight, administrative support, training, maintenance, funding, and dispatching. The Shingletown Volunteer Fire Department also provides fire protection to the CSA.

Present and Planned Land Uses

Existing Land Uses

Land use and building regulation services are provided by the County of Shasta. The County has multiple land use designations for the service area including: Rural Residential, and Planned Development. Land surrounding the CSA is classified as Rural Residential, Building District and is Timber Production Districts.¹

¹*Shasta County Zoning Map: www.co.shasta.ca.us/index/gis_index.aspx.*

General Plan, Zoning, and Policies

CSA #13 is located within the county unincorporated area and is therefore subject to the Shasta County General Plan and Zoning Regulations. The Shasta County General Plan and Zoning Code designates most of the territory within the District boundaries for Rural Residential (R-R) and Building Site District (B). The Rural Residential (R-R) district is consistent with the Rural Residential "A" (RA) General Plan Land Use Designation which "provides living environments receiving no, or only some urban services, usually within or near a Rural Community Center". The maximum residential density for (RA) is 1 dwelling unit per 2 acres. This district is consistent with all general plan designations, if the proposed use blends harmoniously with the natural features of the surrounding area.

Population and Growth

Alpine Meadows is not a census-designated place so actual population statistics for the District are not available. Based on census blocks and geospatial analysis, the estimated population for CSA #13 was 43 in 2010. Looking at future population estimates, growth in the unincorporated areas of Shasta County appears to be negligible. A 2016 DOF report notes a recent decrease of 0.5 percent in the County's unincorporated population between 2015 and 2016, indicating a future potential for population loss in unincorporated areas such as CSA #13.² However,

population estimates for the county still predict an increase of between zero and 0.5 percent through 2035.³ Using the 0.5 percent annual growth estimate and the 2010 population, the CSA #13 population will increase to 48 by the year 2035.

² CA DOF: http://www.dof.ca.gov/Forecasting/Demographics/Estimates/documents/Price-Population_2016.pdf?zoom_highlight=shasta+population

³ Caltrans www.dot.ca.gov/hq/tpp/offices/eab/socio_economic_files/2013/Shasta.pdf

Disadvantaged Unincorporated Communities

LAFCO is required to evaluate water service, sewer service, and structural fire protection within disadvantaged unincorporated communities as part of this service review, including the location and characteristics of any such communities. A disadvantaged unincorporated community (DUC) is defined as any area with 12 or more registered voters where the annual median household income (MHI) is less than 80 percent of the statewide annual (MHI) (pursuant to Government Code § 56033.5 and Water Code § 79505.5). Within a DUC, three basic services are evaluated: water, sewage, and fire protection. CSA #13 Alpine Meadows provides two of these services – domestic water and sewage - and is therefore responsible for assuring that these services are adequately provided to the community. As mentioned above, CSA #1 provides fire protection for CSA #13.

CSA #13 Alpine Meadows is in Community Tract, 06089012603 which meets the definition of a Disadvantaged Community Tract.⁴ The Tract has a MHI of \$48,528, which is 79 percent of the state MHI,⁵ thereby determining the area as disadvantaged. Should territory in the surrounding area be evaluated for annexation in the future, disadvantaged communities in the area should be further considered.

⁴ CA Department of Water Resources: <https://gis.water.ca.gov/app/dacs/>

⁵ Census Quick Facts: <https://www.census.gov/quickfacts/table/PST045215/06>

District Service & Infrastructure

Water Service Overview

CSA #13 provides water collection, treatment and distribution for the community of Alpine Meadows. The CSA currently serves a population of approximately 43 with 27 active, metered connections. There are 15 additional connections available on standby.

CSA #13 holds a state water permit for treatment and delivery of drinking water used for municipal purposes (public water system No. 4500314). The water system and treatment plant are reviewed annually by the Shasta County Department of Public Health.

Based on the Department of Water Resources Groundwater Basin Maps (Bulletin 118), CSA #13 is not located in a formally designated Groundwater Basin; however, it does directly utilize groundwater as a water source. CSA #13 is in the Clear Creek – Sacramento River Watershed.

Water Source and Distribution

CSA #13 – Alpine Meadow's primary water source is a well located at the end of Whispering Winds Court. There is an additional well in the same vicinity that is no longer active.⁶ Water is distributed to customers and electronic monitoring is in place. Current water supply meets current demands and could adequately supply the 15 standby connections.

⁶ www.co.shasta.ca.us/docs/Public_Works/csa-consumer-confidence-reports/csa13-ccr-2015.pdf?sfvrsn=2

Table 2: CSA #13 – Jones Valley Source Data

Source	Status	Capacity (gpm)
Well	Active (Jan-Dec)	40 gpm 5800 (gpd)

Table 3: CSA #13 Jones Valley Water Mains

Materials	lengths	Size
C900	1600'	10" diameter
C900	2200'	8" diameter
C900	800'	6" diameter

Table 4: CSA # 13 Jones Valley Storage Data

Name	Type	Capacity	Comments
Main tank	Bolted Steel	96,000 gallons	Finished water storage tank

Wastewater Service Overview

CSA #13 - Alpine Meadows currently has a total of 30 active connections to its sewer system with 24 residential connections and 6 commercial connections. Another 26 are available on standby. The wastewater treatment system serving the ten commercial lots consists of a gravity sewer, common septic tank, pump station, force main and dual leach field system to accommodate up to 3,000 gpd of wastewater flow. Leach field locations are shown on Figure 1.

The wastewater system was originally constructed 1970 as a subdivision map and development permit condition. The Alpine Meadows subdivision leach field area is located South of Hwy 44 on Parcel number (APN 703-020-016). It is located in the Inwood Hydrologic Subarea No. 507.22.

System Monitoring

The California Regional Water Quality Control Board, Central Valley Region identifies the reporting requirements for effluent flow, leach field inspections, sludge monitoring, and groundwater monitoring in Monitoring and Reporting Program No. R5-2005-0025.

Source: www.waterboards.ca.gov/centralvalley/board_decisions/adopted_orders/shasta/r5-2005-0025.pdf

Infrastructure Needs and Deficiencies

There are indications of water loss in the treated water distribution system due to aging infrastructure. The County Public Works Department is monitoring this situation and may seek grants to upgrade water delivery system to address this condition. This CSA has no master plan regarding infrastructure expansion.

Financial Information

Table 5. CSA #13 Alpine Meadows Revenues & Expenditures

Revenue	Adopted 16-17	Actual 2015-16	Actual 2014-15
420000 – Interest	\$70	\$88	\$123
693020 – Water Service Collections	\$12,000	\$11,209	\$11,477
693500 – Sewer Service Charges	\$27,000	\$24,677	\$25,816
Total Revenue	\$39,070	\$35,974	\$37,416
Expenses			
35200 – Communications Expense	\$1,400	\$1,440	\$1,371
33500 – Maintenance Of Equipment	\$8,000	\$9,224	\$18
33791 – CHGS GAC MGMT MAINT STR	\$550	\$600	\$600
34100 – Memberships	\$163	\$163	\$153
34591 – CHGS OC Postage SVS	\$288	\$263	\$252
34800 – Prof & Special Services	\$1,300	\$0	\$463
34826 – Prof Lab Services	\$2,000	\$2,251	\$834
34829 – Prof Maintenance Services	\$7,918	\$6,947	\$7,714
34832 – Prof Monitoring Services	\$12,000	\$13,462	\$11,981
34900 – Publication & Legal Notices	\$0	\$7	\$0
35100 – Rents & Leases of Equipment	\$0	\$0	\$1,281
35700 – Special Departmental Expense	\$6,800	\$2,557	\$7,151
36100 – Utilities	\$6,300	\$5,347	\$4,966
50001 – Central Service Cost A-87	\$2,979	\$1,760	\$1,851
50200 – Retirement Of Long Term Debt	\$1,667	\$1,667	\$1,667
50900 – Depreciation Expense	\$4,495	\$4,495	\$4,495
50901 – DEPR XP Water	\$2,575	\$2,575	\$2,575
Total Expenses (without depreciation)	\$58,435	\$45,688	\$40,292
Net Total (Deficit)	-\$12,295	-\$9,714	-\$2,876

Source: Shasta County

As discussed below, basic operating revenue come from bi-monthly (once each two months) water service charges. The current water fees and rates were established by District Ordinance No. 668. Occasionally, additional service is generated when specific services are requested, such as new meter installations. This work is charged at a fixed rate. Any change in the bi-monthly service charges must originate with an engineering report that analyzes existing revenue and projected future costs. Based on that analysis, a new rate structure can be recommended for approval by the Board. A public hearing is held prior to authorizing the rate change. The degree to which there is opposition to the rate change constitutes the constraint to generating additional revenues.

Funding Needs

Water delivery and wastewater collection and treatment system fees are currently the only revenue source for covering system operation costs. Based on past efforts, property based

assessments seem unlikely to receive voter approval. The County is consistently pursuing grant funds for system improvements.

Service Rates

The CSA # 13 fee schedule for water and sewer related services are as follows:

Table 6: CSA #13 Residential In-Service Area Rate Schedule - Effective 2011:

Charge Type	Amount	Applies to:
Basic Water	\$37.00 Bi-monthly	First 12,00 gallons consumed (0-1,604 cf)
Use Charge	\$0.50/ 1,000 gallons	consumption > 12,000 gallons (1,604 + cf)
All Sewer	\$109.50/ HE	All use

HE - Household Equivalent

Commercial Rate Schedule:

The Commercial Rate Schedule shall be the same as the basic bi-monthly in-service area residential rate schedule for the first water meter, plus the basic bi-monthly in-service area residential rate schedule charge for each additional water meter on the parcel.

Installation: Meter and main line extension installations shall be at the sole expense of the person or entity applying.

- (1) When main line extensions are not required, CSA personnel will install the meter based on the following fees to be paid prior to installation:

Table 7: CSA #13 - Water Meter Connection Fees and Road Crossing costs

3/4" Meter	1" Meter	1-1/2 Meter	2" Meter	Road Crossings
\$750.00	\$1,000.00	\$1,250.00	\$1,500.00	\$2,500.00 Deposit+ actual costs

- (2) When main line extensions are required, meter installation and service extension shall be constructed at the sole expense of the person or entity applying for the extension, and shall meet or exceed County minimum standards and requirements. A minimum improvement plan-checking and construction inspection deposit of \$500.00 is required. Once the actual plan-checking and construction inspection costs are determined, a fee to cover those costs shall be imposed and the deposit shall be applied to the fee.

Stand-by and Vacation Status Fees: A stand-by fee of \$10.00 per month, paid by the parcel owner, will be charged for each parcel in the service area for which delivery of water service is available but has not been initiated; whether structures are present or not. Properties that are determined not to be suitable for residential or commercial development are exempt. A vacation status fee of \$10.00 per month is charged to customers with a meter if the property is to receive regular water service for less than three consecutive months per year. The fee to cover the costs of administering the termination and subsequent restoration of service due to vacation status shall be \$140.00. There is also a \$100 wastewater connection inspection fee payable at time of building permit.

Financing Constraints and Opportunities

CSA #13 is an enterprise fund district, meaning most agency revenue streams are subject to Proposition 218, which sets forth various constraints on the generation of revenues for infrastructure services. Bond financing is not subject to Proposition 218 per se, but is subject to a

parallel administrative process. Customers are charged according to existing rate structures. Most operating revenue for CSA #13 is derived from these bi-monthly service charges for water and sewer services.

The last approved rate increase became effective April 2011. Proposition 218 requires CSA #13 to adopt a rate structure which is reflective of the actual cost of service. The current rate structure meets this standard. Available resources are maintained within the County's general operating budget.

Cost Avoidance Opportunities

Regular system consumption monitoring, infrastructure condition inspections, and a capital improvement plan for scheduled replacement and upgrades are effective cost avoidance measures. The County monitors the system with meter records and conducts periodic inspections.

Governance Structure Options

Water Service may be provided by a Community Services District (CSD) or Water District (WD). The residents have the ability to petition LAFCO for CSD formation. It would allow consideration of other services, such as wastewater, and reorganization into an independent district with an elected Board. To pursue this option, residents would prepare and file a LAFCO application, fee deposit, plan for services and a MSR/SOI.

MUNICIPAL SERVICE REVIEW DETERMINATIONS

This section addresses determinations as specified in the Cortese-Knox-Hertzberg Local Government Reorganization Act of 2000 (California Government Code § 56430). As part of the municipal service review process, LAFCO makes the following written determinations.

Growth and population projections

CSA #13 was created to provide municipal water and wastewater service to the community of Alpine Meadows. Population growth and population projections for the area served is expected to be limited or none as the area is built-out. The estimated residential population within the CSA #13 boundary is approximately 43 persons. The projected 2035 population, based on current growth rates is expected to be approximately 48.

The location and characteristics of any disadvantaged unincorporated communities within or contiguous to the Sphere of Influence

CSA #13 has been identified as being a DUC. There are no other DUCs in the vicinity that could be served by the CSA.

Present and planned capacity of public facilities and adequacy of public services, including infrastructure needs or deficiencies

As mentioned in the analysis of services, water loss due to aging infrastructure has been identified. LAFCO recommends that the CSA #13 conduct the appropriate engineering report and cost analysis to estimate needed infrastructure project costs and relay those costs to customers in the form of a fee increase in advance of the next MSR and SOI update cycle.

Financial ability of agencies to provide services

CSA #13 is an “enterprise” district with sewer service funding primarily from service fees and charges. The District periodically reviews and updates fees to maintain a nexus between reasonable charges levied, and actual costs of services provided. The District seeks to be as efficient and innovative as possible in maximizing the use of existing fiscal resources.

Status of, and opportunities for, shared facilities

CSA #13 is located in a rural region where physical separation from other communities limits the area where extension of sanitary sewer service is practical. Due to limitations in distance and terrain, no opportunities for shared facilities have been identified. There is no known overlapping or duplication of services within the CSA’s boundaries.

Accountability for community service needs, including governmental structure and operational efficiencies

The CSA is governed by the Shasta County Board of Supervisors. There is no citizen advisory board for CSA #13. The CSA demonstrated accountability and transparency by disclosing financial and service related information in response to LAFCO requests.

Any other matter related to effective or efficient service delivery, as required by commission policy

None beyond those listed above.

SPHERE OF INFLUENCE DETERMINATIONS

Shasta LAFCO makes the following written determinations.

Present and planned land uses in the area, including agricultural and open-space lands.

Shasta County designates much of the area served as rural residential, agricultural, and timber lands. This is a rural area with community development either clustered around the district or along surrounding county roads.

Present and probable need for public facilities and services in the area.

If the SOI is expanded, additional services will be needed. This services need has been analyzed in County permitting and CEQA review for the zoning amendment. An SOI expansion is proposed as part of this Update based on the County being able to provide services.

Present capacity of public facilities and adequacy of public services that the agency provides or is authorized to provide.

The CSA was formed to provide municipal water and wastewater services. District facilities provide for current service needs within the CSA boundary. There is a need to upgrade existing infrastructure to maintain that service for the future. Capacity to serve the areas within the current SOI boundary is also dependent on infrastructure upgrades. There is also no expected change to the present capacity or adequacy of the public services currently provided by the CSA, except for services for the SOI expansion area and proposed annexation.

Existence of any social or economic communities of interest in the area if the commission determines that they are relevant to the agency.

CSA #13 is located east of the City of Redding, which provides a major shopping and service industry hub for local residents in Shasta County. Shingletown's commercial and public businesses support daily local needs of the population.

For an update of a sphere of influence of a city or special district that provides public facilities or services related to sewers, municipal and industrial water, or structural fire protection, the present and probable need for those public facilities and services of any disadvantaged unincorporated communities within the existing sphere.

The Alpine Meadows area within the SOI is considered a DUC. There are no DUCs adjacent to the CSA that should be considered for inclusion in the SOI.

LAFCO RESOLUTION 2017-05

RESOLUTION OF THE SHASTA LOCAL AGENCY FORMATION COMMISSION MAKING WRITTEN DETERMINATIONS AND UPDATING THE MUNICIPAL SERVICE REVIEW & SPHERE OF INFLUENCE FOR THE COUNTY SERVICE AREA #13 ALPINE MEADOWS

WHEREAS, the Shasta Local Agency Formation Commission, conducts studies of the provision of Municipal Services Review (MSR) in conjunction with reviewing the Spheres Of Influence (SOI) of the local governmental agencies whose jurisdictions are within Shasta County; and

WHEREAS, Government Code Section 56425(g) requires that LAFCO review and updated adopted SOI boundaries, as necessary, not less than once every five years; and

WHEREAS, Government Code Section 56430 requires that a MSR be conducted prior to or in conjunction with a SOI update; and

WHEREAS, the County Services Area #13 (CSA #13) Alpine Meadows's sphere of influence boundary was last updated in 2014; and

WHEREAS, the Executive Officer, pursuant to the Government Code Section 56000 *et seq.*, has prepared a MSR and a proposed updated SOI boundary recommendation for the CSA #13 Alpine Meadows; and

WHEREAS, in the manner required by law, the Executive Officer has given notice of the public hearing by the Commission on the proposal; and

WHEREAS, the Commission has heard, discussed and considered all evidence presented at a public hearing held on the MSR and SOI on April 6, 2017 for CSA #13 – Alpine Meadows.

NOW THEREFORE, IT IS RESOLVED, DETERMINED AND ORDERED as follows:

1. Pursuant to Government Code Sections 56425 and 56430, the Commission hereby makes the statements of determinations included in the CSA #13 – Alpine Meadows's Municipal Services Review and Sphere of Influence boundary update (Exhibit A).
2. Shasta LAFCO, as the lead agency, circulated a Notice of Intent to Adopt a Statutory Exemption for this project, responded to written comments received during the review period and hereby intends to certify a Statutory Exemption pursuant to the California Environmental Quality Act (CEQA) for the proposed update of its Sphere of Influence.
3. The Commission, pursuant to Government Code Section 56425(e), makes the following specified determinations based upon data within the municipal service review to update the CSA #13 - Alpine Meadows's Sphere of Influence:
 - A. *Present and planned land uses* – Shasta County designates much of the area served as rural residential, agricultural, and timber lands. This is a rural area with community development either clustered around the district or along surrounding county roads.
 - B. *Present and probable need for public facilities; adequacy of services* – If the SOI is expanded, additional services will be needed. This services need has been analyzed in County permitting and CEQA review for the zoning amendment. An SOI expansion is proposed as part of this update based on the County being able to provide services.

- C. *Present capacity of the public facilities and adequacy of public services* – The CSA was formed to provide municipal water and wastewater services. District facilities provide for current service needs within the CSA boundary. There is a need to upgrade existing infrastructure to maintain that service for the future. There is also no expected change to the present capacity or adequacy of the public services currently provided by the CSA, except for services for the SOI expansion area and proposed annexation.
- D. *Existence of any social or economic communities of interest* – The CSA is located east of the City of Redding, which provides a major shopping and service industry hub for local residents in Shasta County. Shingletown’s commercial and public businesses support daily local needs of the population.
- E. *Present and probable needs of disadvantaged unincorporated communities (DUCs) within the area* – The Alpine Meadows area within the SOI is considered a DUC. There are no DUCs adjacent to the CSA that should be considered for inclusion in the SOI.

5. The Executive Officer is hereby directed to complete update proceedings, and to schedule the subsequent review and update, as necessary, of this Agency’s municipal service review and sphere of influence boundary five years from this approval date as required by statute.

6. The CSA #13 - Alpine Meadows’s District Sphere of Influence is hereby updated and approved as presented on the attached map (Exhibit B).

Adopted on April 6, 2017, by the following vote:

AYES:
NOES:
ABSTAINS:
ABSENT:

Dated: _____

Irwin Fust, Chairman
Shasta Local Agency Formation Commission

Attest:

Dated: _____

George Williamson, Executive Officer