

Les Baugh
County Member

Pamelyn Morgan
City Member

Stan Neutze
City Member Alternate

Mark Mezzano
City Member

Irwin Fust
Special District Member

Mary Rickert
County Member Alternate

Brenda Haynes
Special District Member



Larry Russell
Public Member

Joe Chimenti
County Member

Fred Ryness
Special District Alternate

Katharine Ann Campbell
Public Member Alternate

George Williamson
Executive Officer

James M. Underwood
General Counsel

Kathy Bull
Manager

NOTICE OF FILING SHASTA LOCAL AGENCY FORMATION COMMISSION

Date: April 26, 2021

To: Fall River Valley Fire Protection District; Mayers Memorial Health Care District; Pine Grove Cemetery District; Shasta County Administrative Office; Shasta County Assessor's Office; Shasta County Clerk of the Board; Shasta County Auditor's Office; Shasta County Election's Office; Shasta County Planning and Building Department; Shasta County Service Area #1 County Fire; Shasta County Sheriff's Office

From: Kathy Bull, Shasta LAFCO Office Manager

Subject: Application Received - Fall River Valley Community Services District (CSD) - Annexation

APPLICATION INFORMATION

Project: Proposed annexation of territory to the Fall River Valley CSD inside Sphere of Influence.

Location: See attached location map

Notice: The above referenced proposal has been submitted to Shasta LAFCO and this notice of filing is being issued in accordance with Government Code Section 56133 and 56658(b)(1). If you wish to receive a copy of the application materials and supporting documents, please contact LAFCO at (530) 242-1112 or email the LAFCO Manager at manager@shastalafco.org. Shasta LAFCO requests all Agency comments on the proposed actions to be submitted by May 14, 2021.

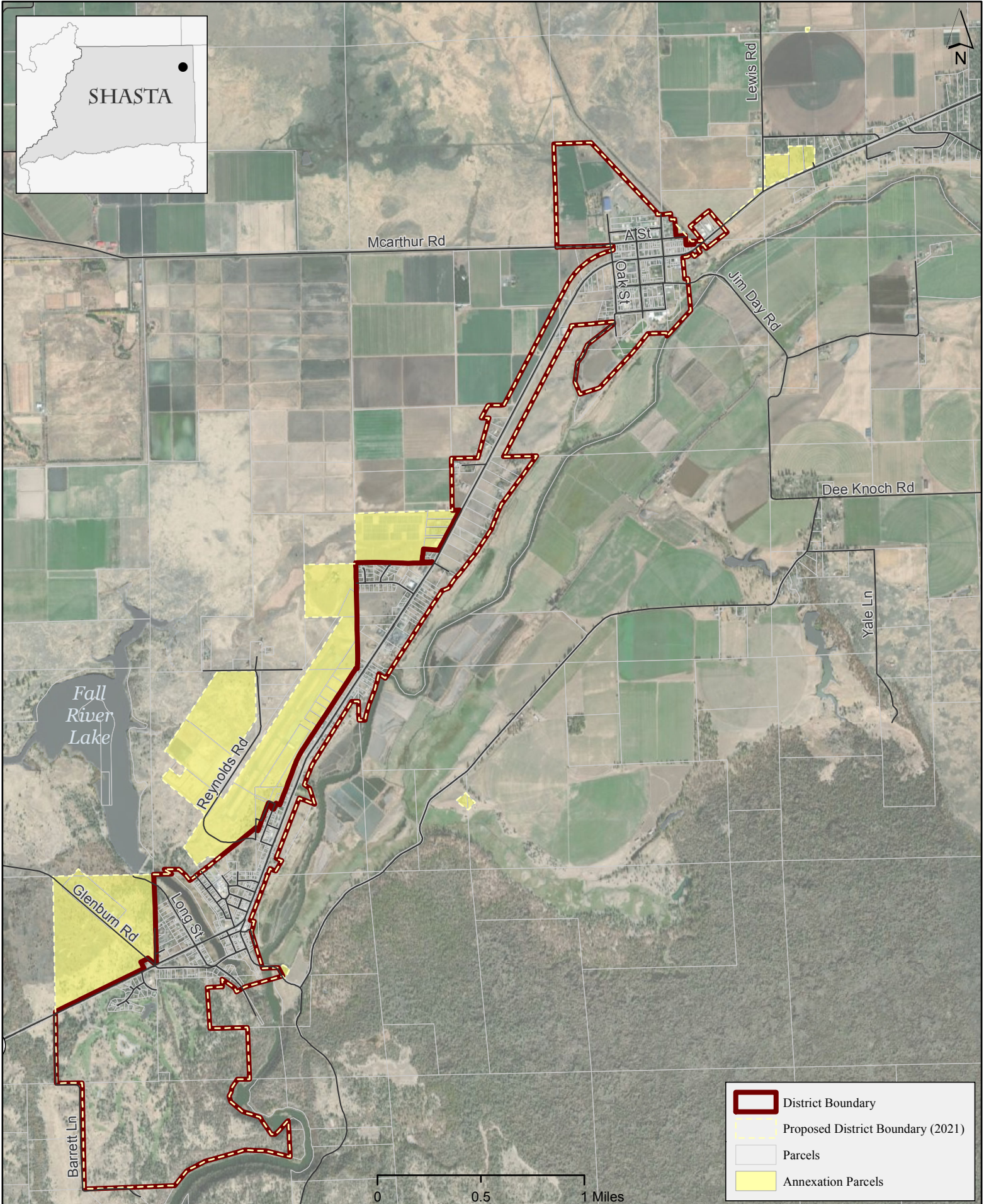
Applicant: Fall River Valley Community Services District

Attachment: Exhibit A Vicinity Map

Cc: Shasta LAFCO Executive Officer
Cecil Ray, General Manager- Fall River Valley Community Services District



SHASTA



- District Boundary
- Proposed District Boundary (2021)
- Parcels
- Annexation Parcels



Fall River Valley CSD Proposed Annexation

Figure
Exhibit A

Date: 2/16/2021

Sources: Boundaries, Roads, Parcels: Shasta County GIS.